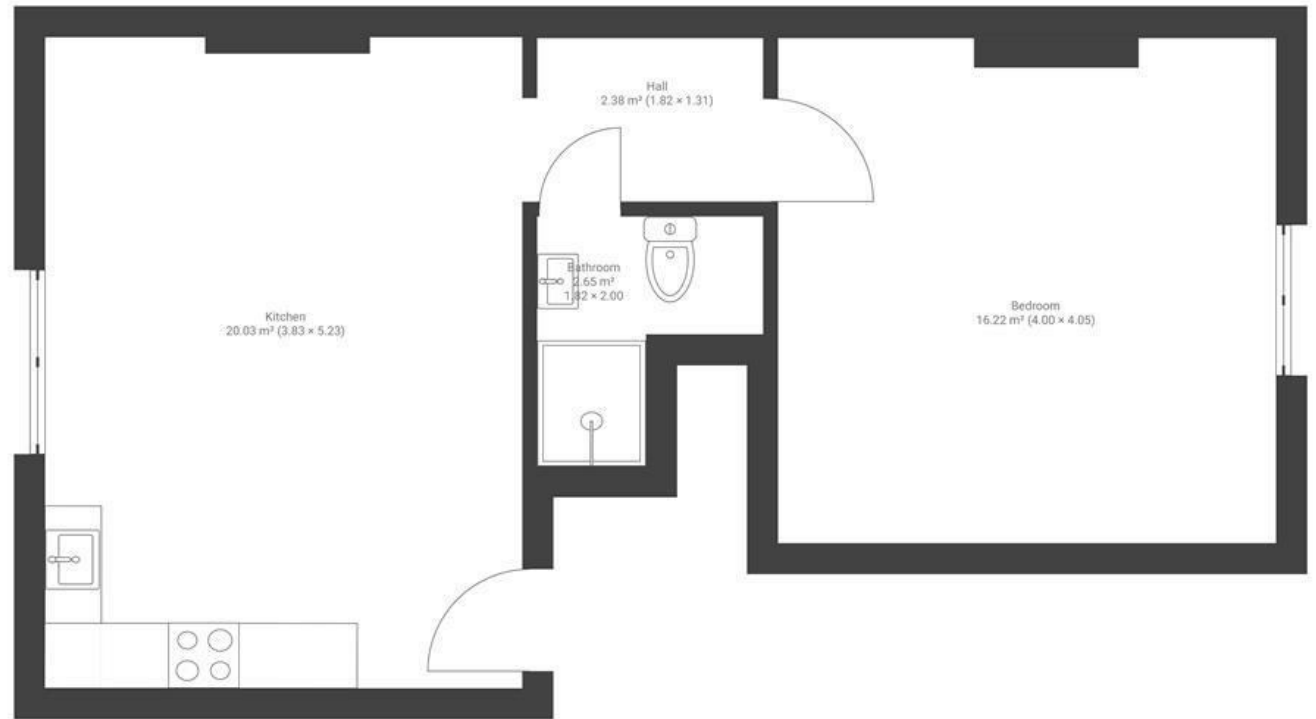


Ashley Road

MONTPELIER

APPROXIMATE FLOOR AREA
42.4 SQM / 456 SQFT



GROUND FLOOR

Boardwalk

Ashley Road

MONTPELIER, BRISTOL

£

£240,000



BS6 5NU

zzz

1 Bedrooms



1 Bathrooms

"We have absolutely loved living in this flat, which is full of period charm and character. The high ceilings and large windows flood the space with natural light in the summer, creating a bright and airy feel, while in the winter, the wood-burning stove makes for wonderfully cosy evenings. The combination of historic features and warmth has made this a truly special home.

With Montpelier, Stokes Croft, Gloucester Road, and Redland right on our doorstep, we're spoiled for choice with exciting bars, diverse restaurants, and a buzzing atmosphere to enjoy any day of the week. It's been the perfect balance of vibrant city life and a peaceful retreat, and we hope the next owners love it as much as we have!"

